

Hanging Tips

Method 1

Premium industrial strength double sided adhesive tape supplied with Multihook, holds up to 1kg. Multihook is adjustable through 360° and can hang at any angle (figure 2).

Mount Part B in the centre of object (figure 1).

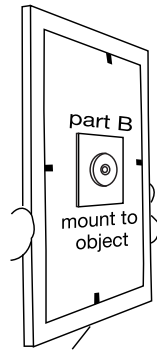


figure 1

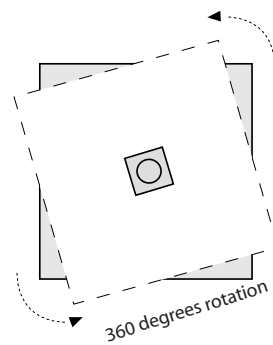
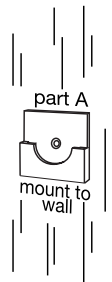
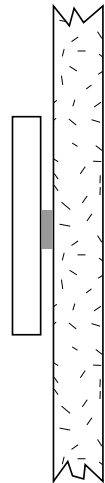


figure 2

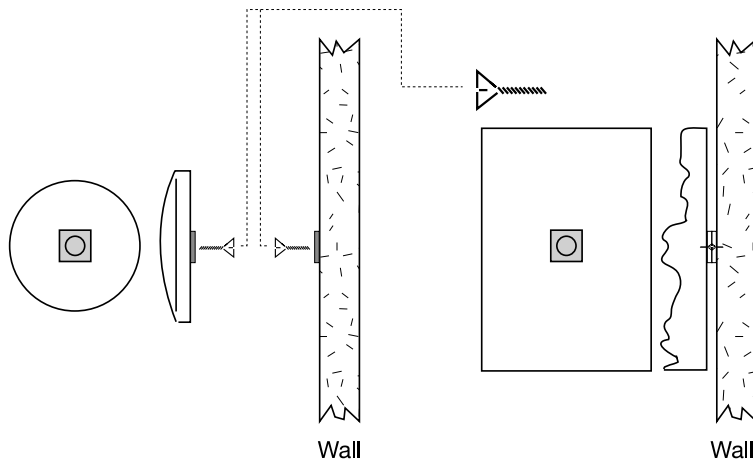


Wall

Method 2

For additional hanging capacity, you may also use 7mm screws into the object through the countersunk hole in the centre of the hook.

We have hung 5kg with this method.



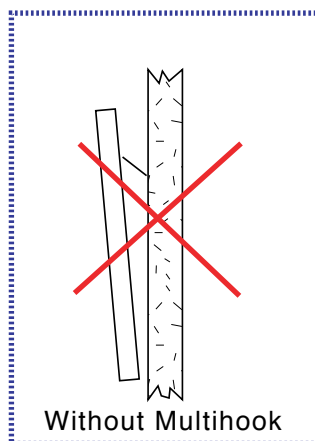
Wall

Wall

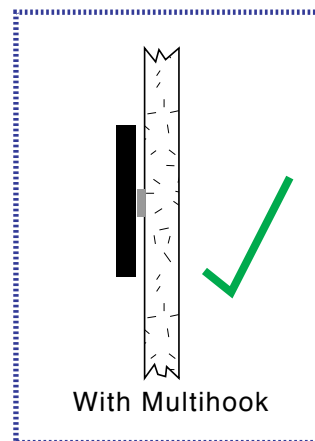
No Shear

Your object will be equidistant off the wall by 6mm at each corner.

Using the Multihook Hanging System there is NO forward fall or shear.



Without Multihook



With Multihook

